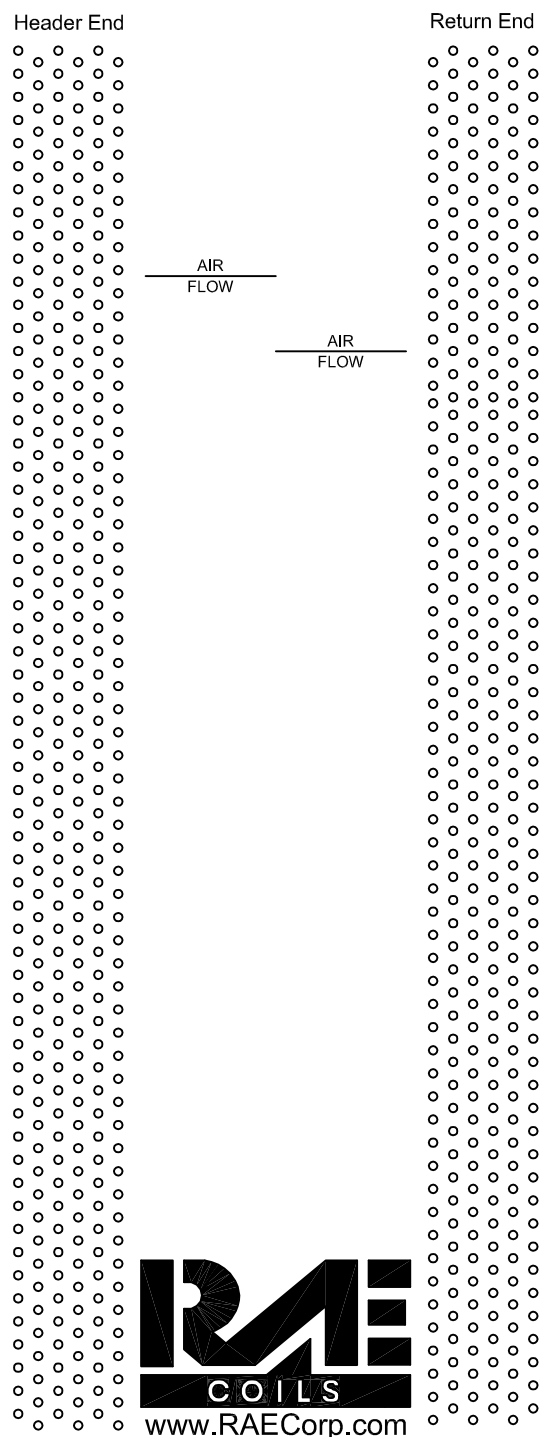
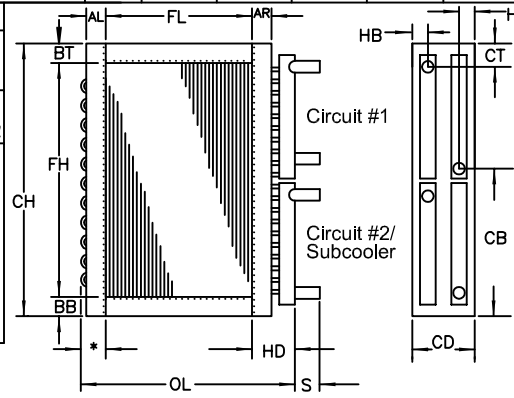


Model #: \_\_\_\_\_ QTY: \_\_\_\_\_ Customer: \_\_\_\_\_ PR#: \_\_\_\_\_

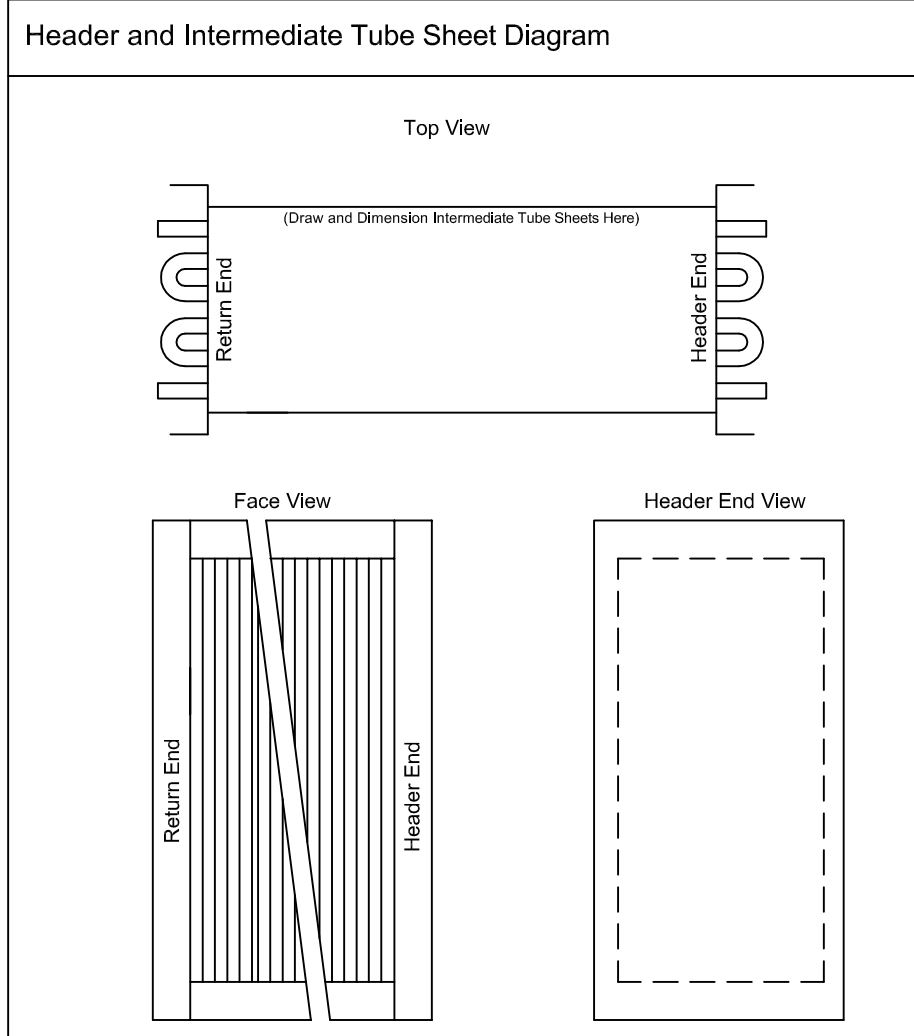
TAG		FH	FL	AR	AL	BB	BT	CH	CD	OL	S	HA	HB	CT	CB	HD
# Circuits	Ref/Fluid Type	Subcooler	S	HA	HB	CT	CB	HD	Circuit 2	S	HA	HB	CT	CB	HD	
		Y / N														

Materials of Construction (Fin, Tube, Casing)			Header & Connection OD		Casing Material & Types						
Fin Mat'l	Alum.	Copper	Acrylic	Inlet Header	Casing Mat'l	Galv.	304L S.S.	316L S.S.			
Fin Thk.	.006	.008	.010	Outlet Hdr	Casing Mat'l	Alum.	*Ultra Casing				
Fin Type	Waffle	*Flat	*Sine	Subcool Hdr	Casing Gage	Tube Sheets	18	16(std)	18,16(std)	14,12	
3/8 Tube Thk.	Rifled .013	Rifled .016	Smooth .016	Inlet Connection	FLANGE TYPE						
1/2 Tube Thk.	.017	.025	.032	Outlet Connection	<input type="checkbox"/> STACKING	<input type="checkbox"/> STANDARD					
5/8 Tube Thk.	.020	.025	.035	Subcool Connect	<input type="checkbox"/> OTHER						



\* Flat fin can only be used on 2 row coils or greater.  
 \* Sine wave fin can only be used on 5/8 tube coils.  
 \* Ultra Casing design includes copper tubesheets between the fin & casing.  
 \* "HD" dimension = Hdr OD+ 2"

- \* = 1-5/16 FOR 38 SERIES .013, .016 & .020 R-BENDS
- \* = 1-5/8 FOR 12 SERIES .017 & .025 R-BENDS
- \* = 2-0/0 FOR 12 SERIES .032 R-BENDS
- \* = 1-7/8 FOR 58 SERIES .020 & .025 R-BENDS
- \* = 2-1/4 FOR 58 SERIES .035 & .049 R-BENDS



Notes

---

BY: \_\_\_\_\_

